

Broadcast system control

Multicon programmable control panels

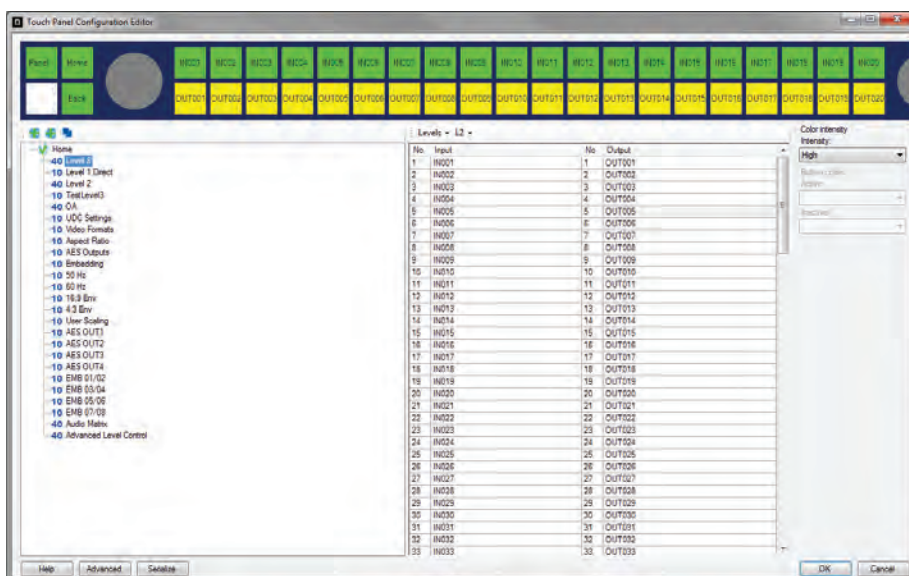
Nevion provides both hardware and software control panels to enable efficient control of VikinX routing and Flashlink signal processing solutions, in studio or outside broadcast environments. All control panels communicate via Multicon controllers over an IP network. The Web Panel is a software based alternative to traditional hardware control panels.

The CP-TOUCH-1U control panel is a highly customizable touch-screen control panel that may be used in a variety of different applications including master control, studio automation and outside broadcast. The control panel is designed for combined control of signal processing and routing equipment.

The CP-MDP, CP-16LCD and CP-44MEC control panels are programmable control panels with traditional push-buttons. The CP-16LCD includes LCD push-buttons where the display text may be software controlled. These control panels are also capable of performing combined control of signal processing and routing equipment.

Key features

- Control levels, virtual routers and salvos in VikinX systems
- Control parameters and matrixes in Flashlink systems
- Combine VikinX and Flashlink control on the same control panel
- Multiple configurations may be applied from Nevion Configurator
- Graphical configuration of button assignments from Nevion Configurator
- Apply common configurations to multiple control panels
- Master Display Panel allows you to control levels, virtual routers, salvos and parameters from the menu system without button assignment



CP-16LCD+

LCD-button control panel

Key features

- 16 LCD buttons with text overlay (32x24 pixels)
- Tri-color button illumination
- Connects to one or more Multicon controllers over IP
- GPIO input/output closures for joystick override
- Supports level, virtual router, salvo and parameter control
- Control VikinX routers and Flashlink cards
- Remotely configurable via Nevion Configurator



CP-44MEC+

Button control panel

Key features

- 44 buttons with exchangeable stickers for labels
- Option for customizable surface design
- Tri-color button illumination
- Connects to one or more Multicon controllers over IP
- GPIO input/output closures for joystick override
- Supports level, virtual router, salvo and parameter control
- Control VikinX routers and Flashlink cards
- Remotely configurable via Nevion Configurator



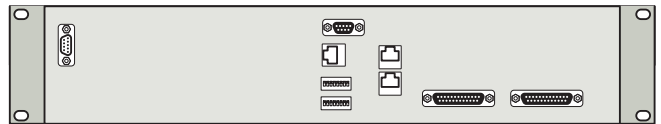
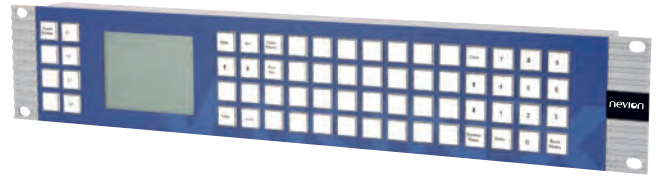
Broadcast system control

CP-MDP-CL+

Master display panel

Key features

- 64 buttons with exchangeable stickers for labels
- Option for customizable surface design
- Tri-color button illumination
- LCD display that shows status and may be used to control without button assignment
- Connects to one or more Multicon controllers over IP
- GPIO input/output closures for joystick override
- Supports level, virtual router, salvo and parameter control
- Control VikinX routers and Flashlink cards
- Remotely configurable via Nevion Configurator



CP-TOUCH

Advanced touch screen control panel

Key features

- Touch screen interface with up to 40 virtual buttons
- Adjustable color assignment per button
- Support for multiple button layouts (and navigation between layouts)
- Menu based navigation (no button configuration required)
- Accelerated adjustment of parameters using rotary wheels
- Scrollable input and output selection using rotary wheels (for large router support)

