



## Management

### CP-TOUCH

# Advanced touch screen control panel

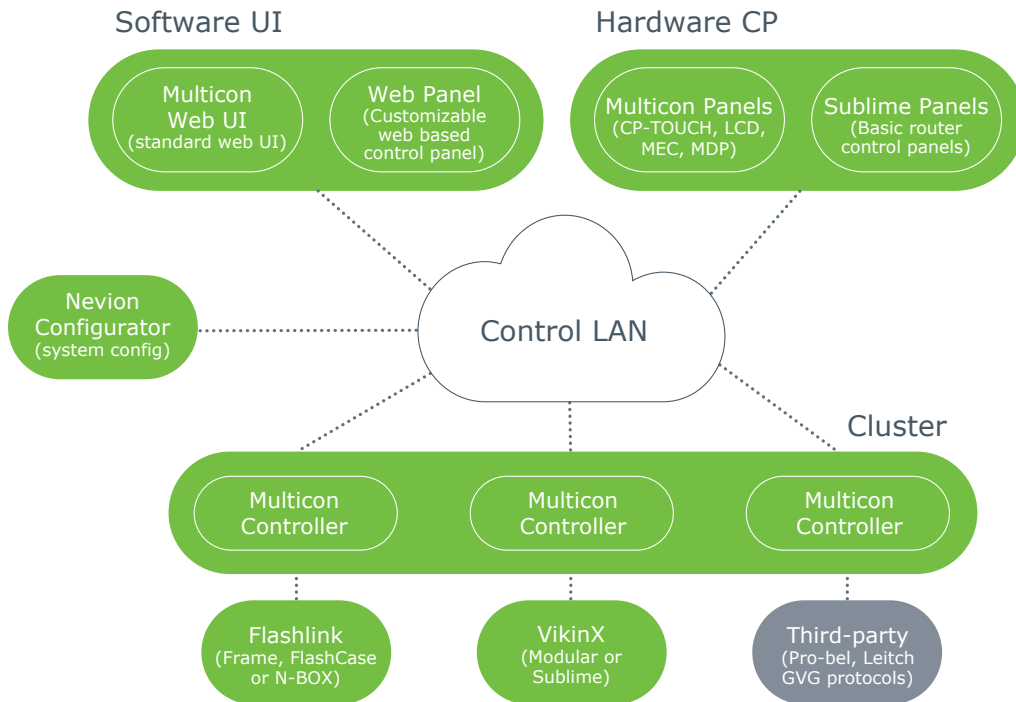
#### Application overview

The CP-TOUCH control panel is a highly customizable touch screen control panel that may be used in a variety of different applications including master control, studio automation and outside broadcast. The control panel is designed for combined control of signal processing and routing equipment.

CP-TOUCH occupies one rack-unit and the control surface is based on a wide touch-screen that works in conjunction with two rotary wheels. The touch-screen allows for the customization of the user experience.

#### Key features

- Touch screen interface with up to 40 virtual buttons
- Adjustable color assignment per button
- Support for multiple button layouts (and navigation between layouts)
- Menu based navigation (no button configuration required)
- Accelerated adjustment of parameters using rotary wheels
- Scrollable input and output selection using rotary wheels (for large router support)



### Signal processing

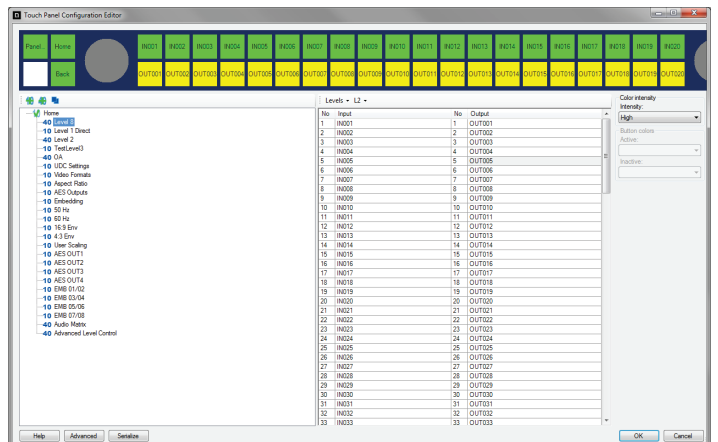
The CP-TOUCH-1U panel facilitates control of parameters supported by Flashlink signal processing equipment. Pre-defined setups may be programmed into a salvo and activated by a single button push or individual parameters such as aspect ratio or gain settings may be accessed from the menu and adjusted on the fly. Salvos are a powerful mechanism to apply pre-defined settings for a single processing card or across multiple cards that are part of the production chain. The ability to use multiple layouts on the touch-screen allows the user to pre-define a large number of parameters for easy and rapid access. The rotary wheels are used to navigate menus and for adjusting parameters. To apply parameters simply click the rotary wheel.

### Router control

The CP-TOUCH-1U panel allows traditional router control using input/output virtual push-buttons on the touch-screen, but a new innovative feature also allows routing control using the rotary wheels. Inputs and outputs – virtual or physical – may be selected using the rotary wheels and crosspoint settings taken by clicking on the wheel. This is ideal for master control purposes where it is not necessary to define push-buttons for each input/output. The control panel is also fully compatible with existing IP-based control panels from Nevion, and the CP-TOUCH-1U panel may be used in combination with CP-16LCD+, CP-44MEC+ and CP-MDP+ panels.

### Configuration

The control panel is configured using the Nevion Configurator tool, which is a free tool from Nevion. The panel is added to a system with one or more Multicon controllers and the layouts of the touch-screen may be configured graphically. The panel also supports connectivity to up to three different Multicon controllers for system redundancy. The panel also supports user logins with different access and control privileges. Users may login to the system using a PIN code or a default user may be assigned to the panel.



### General

Power input	100 – 240V, 47 – 63Hz 0.55A
Power internal	+5V DC
Physical dimensions	483 x 44 x 45mm (19" 1RU)

### Touch-screen

Resolution	1280 x 120
Color depth	16 bit
Polarizer type	Transmissive
Backlight	White (adjustable)

### Control

Rotary wheel	2 x optical switches with push to click
Push-button	4 x physical buttons with RGB backlight
Sound	Piezoelectric buzzer

### Interfaces

Ethernet	10BASE-T / 100BASE-TX
Ethernet connector	1 x RJ45
GPIO	Open collector 30V 0.5A tolerant
GPI input	16
GPI output	16
GPI connector	2 x DB-25 female
Serial	RS232
Serial connector	1 x DB-9

### Environmental

Temperature range	-10°C to 55°C
Relative humidity range	<95%

### Ordering options

CP-TOUCH-1U	Programmable touch-screen control panel with rotary wheels, 4 push-buttons 1RU, IP control interface, 16 GPIO
-------------	---

### Control features

- Touch screen interface with up to 40 virtual buttons
- Adjustable color assignment per button
- Support for multiple button layouts (and navigation between layouts)
- Menu based navigation (no button configuration required)
- Accelerated adjustment of parameters using rotary wheels
- Scrollable input and output selection using rotary wheels (for large router support)





## CONTACT INFORMATION

---

### The Americas

ussales@nevron.com +1 (805) 247-8560

### Asia Pacific

asiasales@nevron.com +65 6872 9361

### Europe and Africa

sales@nevron.com +47 33 48 99 99 / +47 22 88 97 50

### Middle East

middle-east@nevron.com +971 (0)4 3901018

### UK

uksales@nevron.com +44 118 9735831

**nevron.com**